

We invest in Orange County and High Desert's health.



Bringing our Mission to life

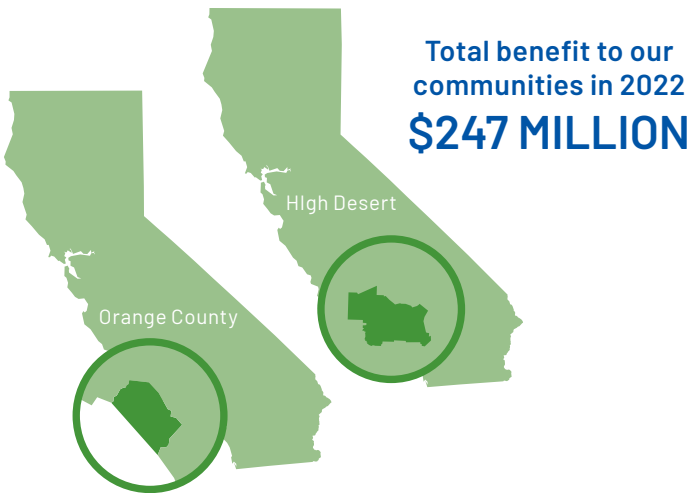
At Providence, we are dedicated to improving community health and reducing disparities in the Western U.S. and beyond. Called by our Mission, we are steadfast in serving all, especially those who are poor and vulnerable.

Taking action on health challenges

To achieve our vision of health for a better world, the Providence family of organizations identifies community health needs and invests in programs and meaningful solutions that meet the diverse needs of our neighbors. Alongside local partners, we build stronger, healthier communities by focusing on areas of lasting impact:

- Foundations of health
- Removing barriers to care
- Community resilience
- Innovating for the future

Our longstanding commitment to identify needs and provide community benefit is an essential way we live our Mission each day.



\$14 MILLION
Community health improvement and strategic partnerships



\$500,000
Health professions education and research



\$8 MILLION
Subsidized health services



\$18 MILLION
Free and discounted care for the uninsured and underinsured



\$206 MILLION
Unpaid cost of Medicaid and other means-tested government programs

* Data is consolidated based on unaudited financial reporting. The numbers include home and community care investments and joint ventures by percentage ownership. Total community benefit for Orange County alone: \$214 million. Total community benefit for High Desert alone: \$33 million. Free and discounted care totals reflect at-cost amount.

Community investment in action

Southern California resource centers support families in need



Across Southern California, Providence ministries help the underserved and improve access to physical and mental health care, housing and food resources, support groups, mental health care, legal aid and more.

From the San Fernando Valley to San Juan Capistrano, Providence resource centers serve those in need. These centers are trusted spaces for the community to access essential social services and get connections to local resources.

In South Orange County, Providence case managers found help for Kim,* a patient, and Kim's family after they fell on hard times. Kim received counseling, food, emergency support, legal help and supplies all from connections of the local resource center.

In the San Fernando Valley, the Providence resource center team helps clients enroll in Medi-Cal and other health insurance, assists with the paperwork, refers clients to health professionals and provides nutrition education.

**To protect patient identity, names were changed for the purposes of this story.*

Patient navigators team up with community partners to help those experiencing homelessness



Thousands of people experiencing homelessness live in Southern California. Hospital ERs often are their source for health care and where they make connections to other critical services.

Samuel* was ready to leave Providence Mission Hospital, following surgery. But, as one of many people experiencing homelessness, he had no place to go.

At Providence Little Company of Mary Medical Centers in Torrance and San Pedro, those with no permanent shelter or place to call home are referred to navigators.

A mental health counselor at the hospital referred him to Family Assistance Ministries. FAM helps provide temporary shelter, access to food and help in obtaining identification and enrollment in Medi-Cal and other services.

The counselor also helped him navigate his care and insurance. Samuel now has permanent housing.

Providence St. Mary Medical Center in the High Desert plans to begin an ER navigator program in 2023 to guide those experiencing homelessness in the communities it serves.

**To protect patient identity, names were changed for the purposes of this story.*

South Orange County Equity Collaborative addresses housing issues



Rosa Melo, with her son, is participating in efforts to help neighbors make ends meet in high-rent community.

The pandemic highlighted critical inequities for some communities of color where Providence Mission Hospital is leading the South Orange County Equity Collaborative, a group of nonprofit leaders and residents assessing needs in a small, impoverished neighborhood in South Orange County.

Many residents in this neighborhood spend 50% or more of their income on housing – 20% more than what is considered economically feasible.

The goal is to change systems and structures that create barriers through direct service, advocacy and policy change.

Providence developed a relationship with the TGR Foundation, a Tiger Woods charity, to support vulnerable youth in an after-school STEM program. This partnership is expanding to provide wellness services for local families, including insurance enrollment and health screenings.

“ In the traditions of our founding sisters, we partner with like-hearted organizations to provide care, housing, food and other critical resources to the poor and vulnerable. ”

– LAUREEN DRISCOLL
Chief Executive
Providence South Division

“ We've been gathering since 2020 to address issues around equity and racial disparities, recognizing these disparities exist even in more affluent communities where they may be less noticeable. ”

– CHRISTY CORNWALL
Director of Providence Community Health
Investment programs in Orange County